

TATA MOTORS KA BHAROSA RAHE AAPKE SAATH HAR KADAM



TATA MOTORS

For more information, please visit our website: www.tatatrucks.tatamotors.com
 You can also contact our Sales Office: Tata Motors Limited, 4th Floor, Ahura Centre, 82, Mahakali Caves Road, MIDC, Andheri (East), Mumbai - 400 093 or call toll-free no. 1800 209 7979.

Terms & Conditions apply as per the policy of ITGI. Insurance available on light, intermediate & heavy commercial vehicles.

CAUTION: Accessories shown in the picture or elsewhere do not constitute standard fitment.

The specifications are merely indicative. Due to continuous product improvements, these specifications are liable to change without notice.

Terms & Conditions apply

TATA MOTORS
Connecting Aspirations

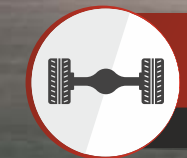


THE LEADING PERFORMER IN 5-AXLE SPACE

Now more Eco-friendly, Reliable and Fuel-efficient

▶ Pusher Lift Axle ▶ Tag Lift Axle

SIGNA 4223.T | LPT 4223



**ENHANCED DRIVETRAIN
HIGHER CAPACITY AXLES**
HIGHER GVW | HIGHER PAYLOAD

42 000 kg GVW

SIGNA 4223.T | LPT 4223

Power of India's Most Favourite 5-Axle Rigid Truck

Available in 3-deck length across 2-wheelbase and Pusher & Tag configurations:

- | | |
|--|--|
| <p>6 255 Tag / 27 ft</p> | <p>Cement, Construction Agg., Mining Surface Transport, MLO, Agri Products, Edible Oil/Chemical/Milk Tankers</p> |
| <p>6 750 Pusher / 27.5 ft
30.6 ft (Signa) 31.7 ft (Cowl)</p> | <p>Cement, POL Tanker, Coal, Tippler, Bitumen Tanker, MLO, Construction Agg., Edible Oil/Chemical/Milk Tankers Parcel & Logistics, Industrial Goods, Agri Products, Tip-Trucks, Tippers, Steel-finished Goods, Cotton Bales, Plastic Granules, AL Coils, Foils</p> |



- **Cummins ISBe 5.9 l 'Umbrella' engine** with Cummins Fuel Injection System and innovative features like twin mode FE switch, 2-stage fuel filtration, VAM, LBSC, GDP, optimised APM & DEF Cal, e-viscous fan and longer oil drain intervals. Reduced maintenance cost with TMGO.
- **GSA: Facilitates Load/Terrain based optimised gear shifting for best mileage in the prevailing operating condition.**
- **New Gen TATA G950 (FGR: 9.36) & pioneering RA 110 (RAR: 5.86)** for excellent traction, loaded acceleration, restartability and optimised fuel economy under diverse operating and loading conditions with enhanced driving comfort and low maintenance. Reduced maintenance cost with TMGO.
- **Tubeless tyre option in both Pusher and Tag variants for better fuel economy**
- **SIGNA Cabin option | World-class riding comfort and driving ergonomics with factory fitted AC, Telematics and Tilt & Telescopic Steering | Available in both Pusher and Tag variants.**
- **Cummins SCR after treatment system** - Clean, safe, robust and reliable.
- Best-in-industry durability, reliability and running performance.
- 34KL PESO approval on longer deck length version.
- Fully built HSD, FSD, Bulker available on order.

TATA ADVANTAGES

- | | | | |
|--|--------------------------------|---|------------------------------------|
| ▶ Most trusted 14-wheeler in India suitable for the widest range of applications | ▶ Maximum loading ability | ▶ Lowest cost per ton km | ▶ Higher fuel efficiency |
| ▶ Customisable AMC offers 6-year/6 lakh driveline warranty | ▶ Longer service intervals | ▶ Lower maintenance cost | ▶ Sustained business profitability |
| ▶ Widest spare & service network | ▶ Low cost spare | ▶ Highest resale value in segment | |
| | ▶ Most viable acquisition cost | ▶ Best-in-industry durability and reliability | |

TECHNICAL SPECIFICATIONS

SIGNA 4223.T | LPT 4223

ENGINE	Engine Description	Cummins ISBe 5.9 180 40 BS4 Common Rail with Cummins Fuel Injection System	
	Engine Capacity No. of Cylinders Engine Output Torque	5 883 cm ³ 6 In-line 171 kW @ 2 500 r/min 810 Nm @ 1 000 - 1 800 r/min	
CLUTCH	Clutch Details Engine Clutch Type Outside Dia of Clutch Lining Type of Actuation	Organic Standard & Cushioned Ceramic Optional Single Plate Dry Friction 380 mm Push Type (Hydraulically Actuated with Pneumatic Assistance)	
	GEARBOX	Model Type First Gear Ratio No. of Gears	Tata G950 6-speed Synchromesh 9.36 6 Forward + 1 Reverse
REAR AXLE	Rear Axle Model Rear Axle Description	RA 110 Single Speed, Hypoid Gear in Pressed Steel Welded Beam with Differential Carrier Housing; Fully Floating Axle Shafts	
	Rear Axle Ratio	5.86	
FRONT AXLE	Front Axle Description	Extra Heavy Duty Forged I Beam, Reverse Elliot Type, 3 Nos. (2 Front Axles + 1 Lift Axle), ABS Front Axle Designed	
	Capacity	7 500 kg	
ELECTRICAL SPECIFICATION	Battery Alternator Capacity	12 V x 2 = 24 V x 120 Ah 100 A New Instrument Cluster with Trip Mileage Indicator	
	TYRES	Size & Type	Option 1: 295/80R 22.5 Tubeless (F+R) Option 2: 295/80R22.5 Tubeless (F) + 10R20 (R)
FRAME	Description	Ladder Type Heavy Duty Frame with Riveted/Bolted Cross Members	
	Dimensions	285 mm x 65 mm x 7 mm	
BRAKES	Type Brake Drum Diameter Auxiliary Braking System	ABS 410 mm Engine Exhaust Brake	
	STEERING	Description	Hydraulic Power Steering with Tilt & Telescopic Steering Column
SUSPENSION	Front Suspension Rear Suspension Lift Axle	Parabolic Spring Semi-elliptical Leaf Spring Pneumatic	
	PERFORMANCE	Max. Gradeability at Rated GVW	18.3 %
LIFT AXLE	Lift Axle Type	Tag/Pusher	
CABIN	Type	SIGNA Cab	
WEIGHTS	Gross Vehicle Weight Max. Permissible FAW Max. Permissible RAW	42 000 kg 7 000 kg + 7 000 kg 7 000 kg + 21 000 kg for Pusher Axle 21 000 kg + 7 000 kg for Tag Axle	
	DIMENSIONS		
Parameter	Tag Axle Variant	Pusher Axle Variant	
Overall Chassis Length	10 807 mm	10 985 mm	11 960 mm
Front Overhang	1 260 mm	1 260 mm	1 355 mm
Rear Overhang	800 mm	2 155 mm	3 135 mm
Wheelbase	6 255 mm	6 750 mm	6 750 mm

Specifications are subject to change without prior notice. These are indicative photos, specifications for reference only.

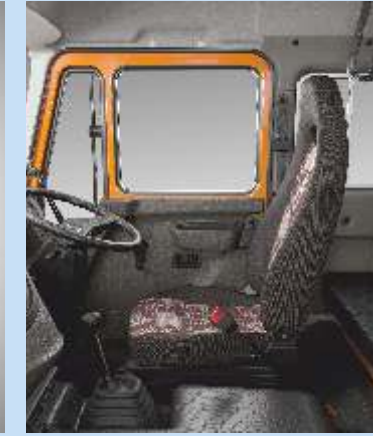
- ▶ All steel cabin
- ▶ Highest level of noise and heat insulation
- ▶ Factory-fitted Tata Fleetman Telematics device
- ▶ Contemporary styling
- ▶ Ease of reparability and serviceability
- ▶ Impact and crash barrier tested
- ▶ Wide angle visibility



Premium interior aesthetics for superior in-cab driving experience



Easy accessibility of controls, comfy and expedient driveability



- ▶ Seats with Emergency Locking Retractor (ELR) seat belts
- ▶ 3-way adjustable mechanically suspended seat for unmatched riding comfort
- ▶ Deep seat cushioning and extended body support for long, fatigueless driving
- ▶ Cockpit type dual tone interiors



Air-conditioning



Electronic viscous fan



Truck ventilation system



Tilt & telescopic steering



- ▶ Ergonomic dashboard design with advanced instrument cluster & tell tale lamps
- ▶ Trip mileage indicator to detect average fuel economy

Improved cabin suspension with front dampers and rear shock absorbers with coil springs

Enhanced driving comfort with transverse cabin shockers at rear

Best-in-class NVH characteristics



Innovative Gear Shift Advisor for load-terrain based gear shift coaching



Provision for infotainment



- ▶ Factory fitted air-conditioning/blower options
- ▶ Elegant control panel with ergonomically positioned switches
- ▶ Fuel Economy Switch for load/gradient based mileage governance
- ▶ Power socket provision



Wide and comfortable sleeper berth with spacious berth box



Both side grab handle and wider door angle for easy ingress/egress



Magazine pocket and bottle holder



Pendant type accelerator and clutch pedal for fatigueless driving



Clear lens wrap-around head lamp for superior visibility coupled with chic styling



LH & RH aero corners for reduced aerodynamic drag and better fuel economy



Lowest step-in height with three step footstep and scuff plate



Lockable glove box beneath co-driver seat



Side close proximity mirror
Normal rear view mirror
Wide angle rear view mirror



Single locking system for entire vehicle



Ergonomic steering wheel



3-piece bumper | Ease of reparability due to modular design

Images are representational



- ▶ Better Fleet Utilisation
- ▶ Higher Vehicle Uptime
- ▶ Better Control of Operating Cost
- ▶ Faster Turnaround Time
- ▶ Proactive Maintenance
- ▶ Higher Driver Productivity
- ▶ Better Return Load Planning
- ▶ Stolen Vehicle Tracking



Real-time Vehicle Tracking



Monitoring of:
Idling | Green Band Driving
Over Speeding | Over Revving
Over Run | Heavy Throttle



Review of Trip Performance between Locations



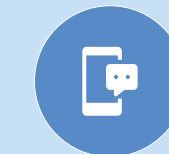
Geo-fencing



Fuel Consumption & DEF Monitoring



Harsh Acceleration, Braking and Cornering Detection



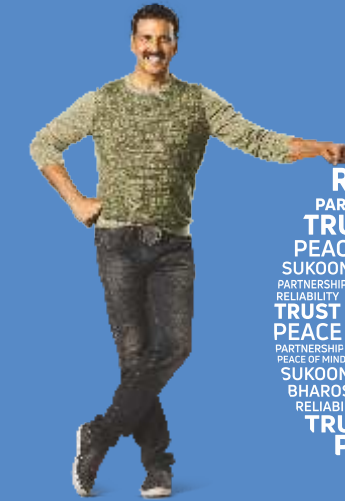
SMS Alerts & Reports



Mobile Application

Tata 6-Year Warranty

Sampoorna khayal har kadam.



6 SAAL. AAPKA KHAYAL.

Terms & Conditions apply